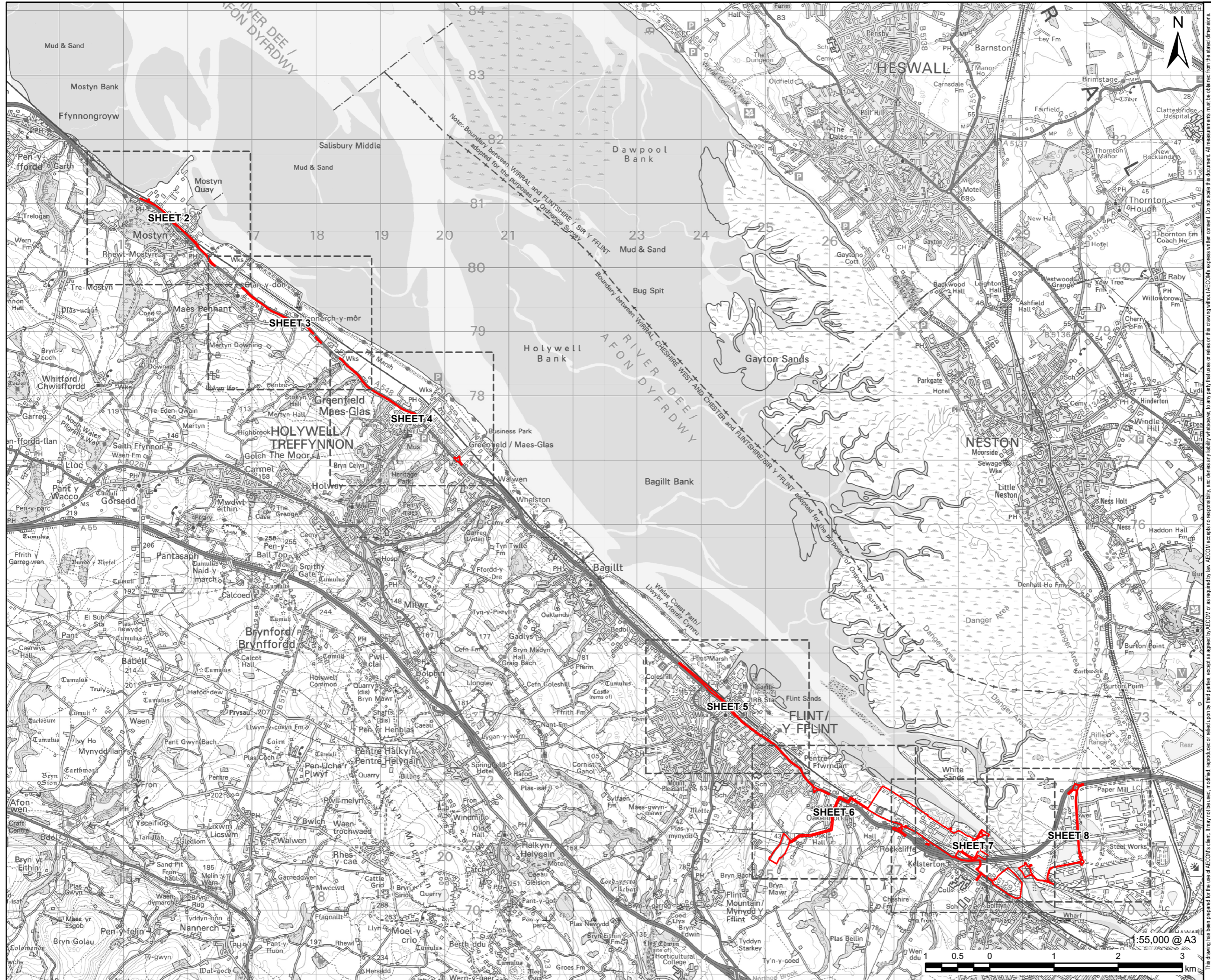


Connah's Quay Low Carbon Power

Environmental Statement Volume III Figure 3-3: Areas Described in the ES

Planning Inspectorate Reference: EN010166
Document Reference: EN010166/APP/6.3
Planning Act 2008 (as amended)
Infrastructure Planning (Applications: Prescribed Forms and Procedure) Regulations
2009 - Regulation 5(2)(a)
Revision 01

March 2026



PROJECT
 Connah's Quay Low Carbon Power

CONSULTANT
 AECOM Limited
 The Colmore Building
 Colmore Circus, Queensway
 Birmingham, B4 6AT
 www.aecom.com

LEGEND
 [Red Outline] Order limits

NOTES
 © Crown Copyright 2025. All rights reserved.
 Ordnance Survey Licence AC0000808122.

ISSUE PURPOSE
 Environmental Statement

DATE
 March 2026

PROJECT NUMBER
 60768754

FIGURE TITLE
 Areas Described in the Environmental Statement
 Sheet 1 of 8

FIGURE NUMBER
 Figure 3-3

This drawing has been prepared for the use of AECOM's client. It may not be used, modified, reproduced or relied upon by third parties, except as signed by AECOM or as required by law. AECOM accepts no responsibility, and denies any liability whatsoever, to any party that uses or relies on this drawing without AECOM's express written consent. Do not scale this document. All measurements must be obtained from the stated dimensions.



NOTES

© Crown Copyright 2025. All rights reserved.
 Ordnance Survey Licence AC0000808122.

ISSUE PURPOSE

Environmental Statement

DATE

March 2026

PROJECT NUMBER

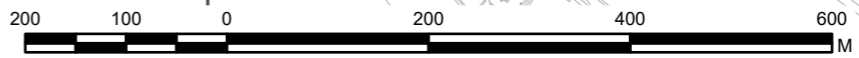
60768754

FIGURE TITLE

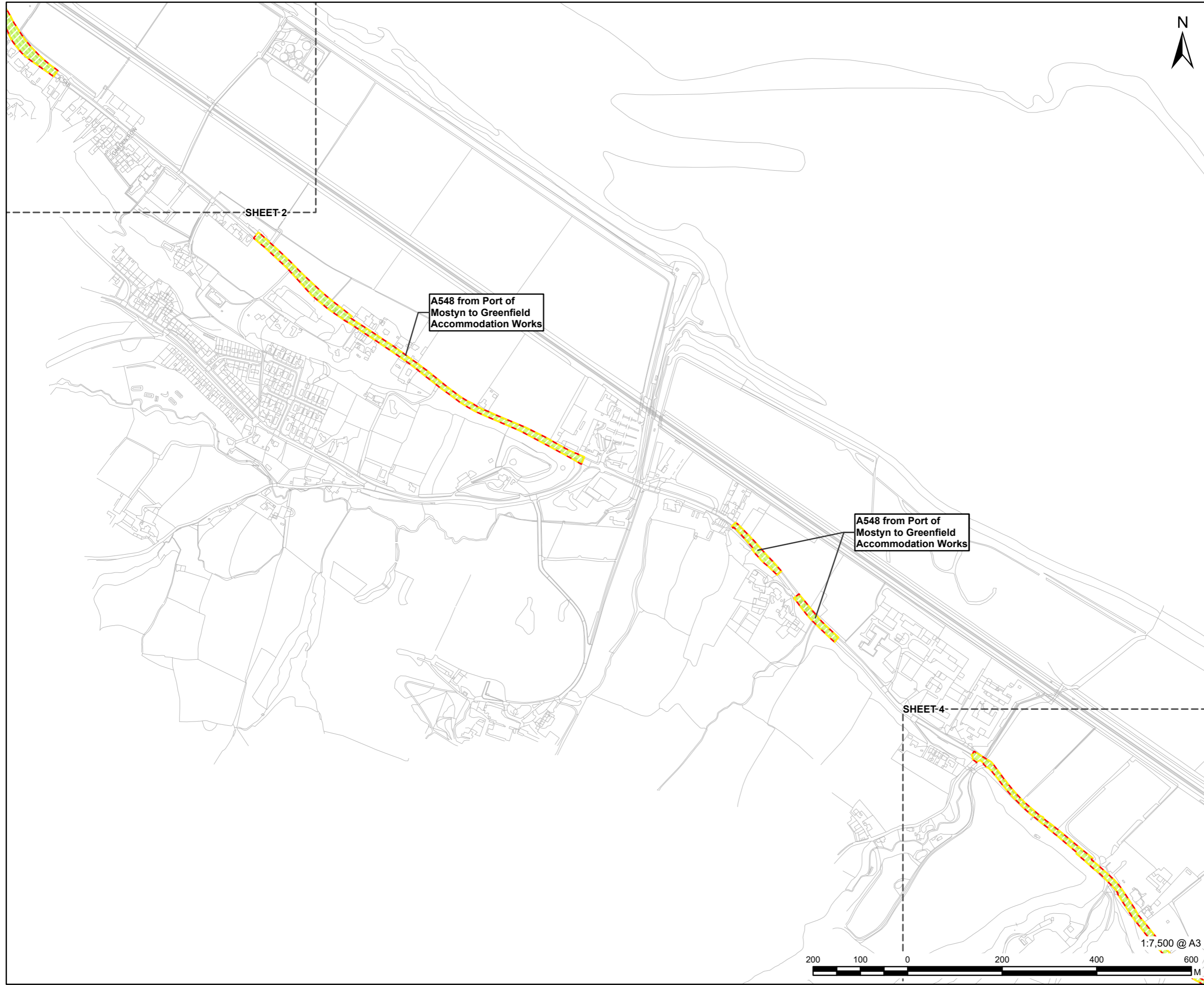
Areas Described in the Environmental Statement
 Sheet 2 of 8

FIGURE NUMBER

Figure 3-3

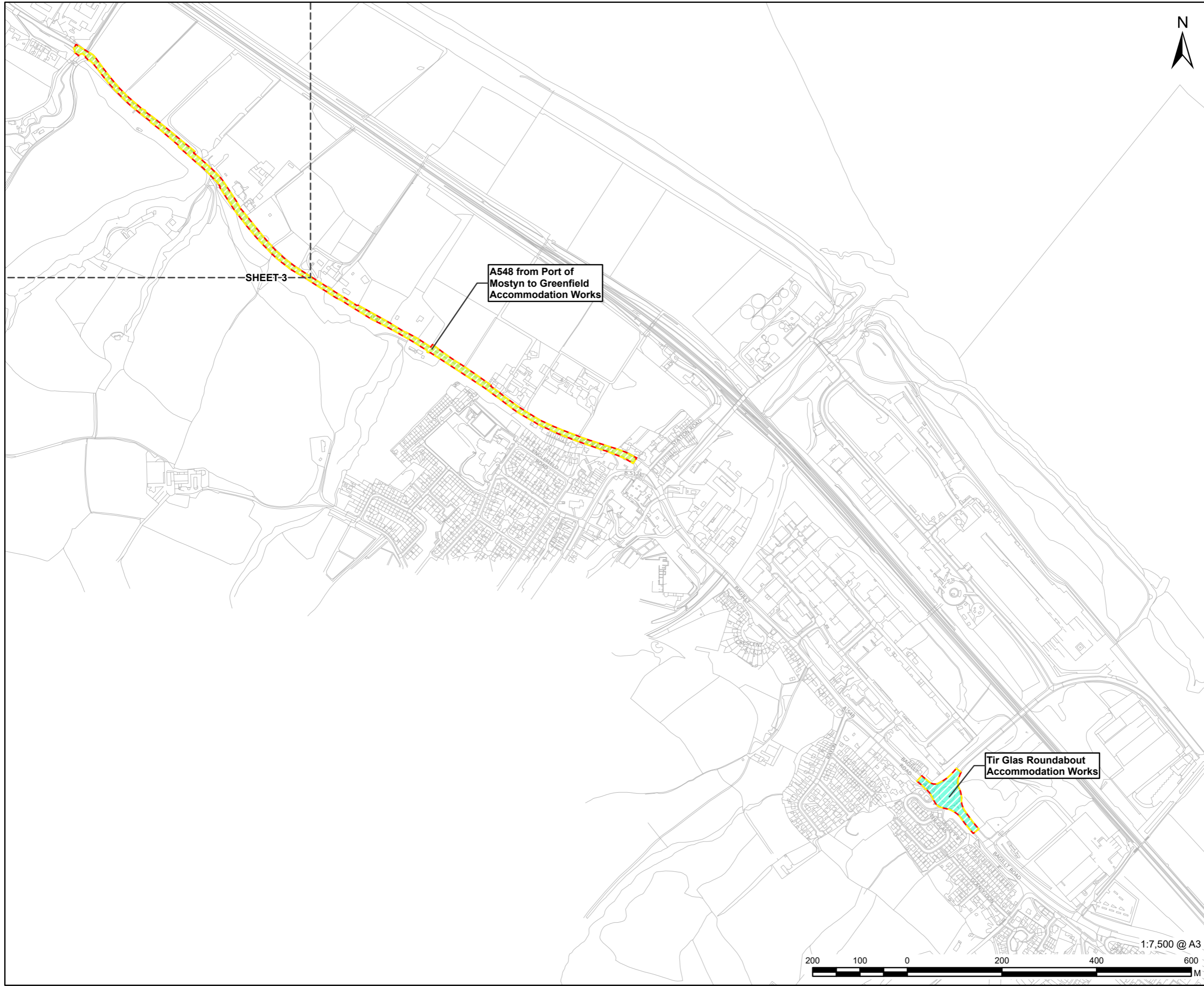


This drawing has been prepared for the use of AECOM's client. It may not be used, modified, reproduced or relied upon by third parties, except as agreed by AECOM or as required by law. AECOM accepts no responsibility, and denies any liability whatsoever, to any party that uses or relies on this drawing without AECOM's express written consent. Do not scale this document. All measurements must be obtained from the stated dimensions.



This drawing has been prepared for the use of AECOM's client. It may not be used, modified, reproduced or relied upon by third parties, except as signed by AECOM or as required by law. AECOM accepts no responsibility, and denies any liability whatsoever, to any party that uses or relies on this drawing without AECOM's express written consent. Do not scale this document. All measurements must be obtained from the stated dimensions.

1:7,500 @ A3



PROJECT
 Connah's Quay Low Carbon Power

CONSULTANT
 AECOM Limited
 The Colmore Building
 Colmore Circus, Queensway
 Birmingham, B4 6AT
 www.aecom.com

- LEGEND**
- Order limits
 - Accommodation Work Area
 - A548 from Port of Mostyn to Greenfield Accommodation Works
 - Tir Glas Roundabout Accommodation Works

NOTES
 © Crown Copyright 2025. All rights reserved.
 Ordnance Survey Licence AC0000808122.

ISSUE PURPOSE
 Environmental Statement

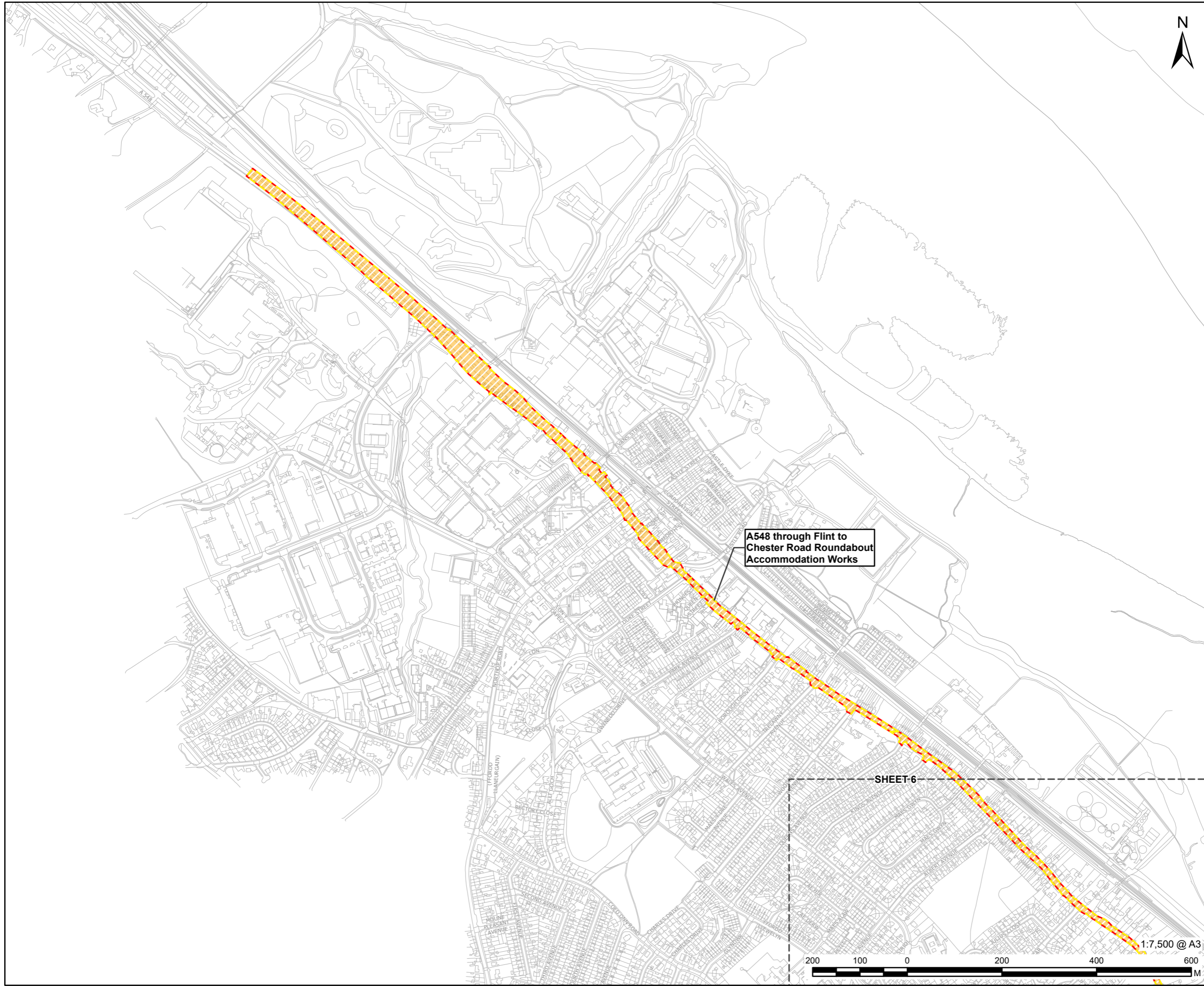
DATE
 March 2026

PROJECT NUMBER
 60768754

FIGURE TITLE
 Areas Described in the Environmental Statement
 Sheet 4 of 8

FIGURE NUMBER
 Figure 3-3

This drawing has been prepared for the use of AECOM's client. It may not be used, modified, reproduced or relied upon by third parties, except as signed by AECOM or as required by law. AECOM accepts no responsibility, and denies any liability whatsoever, to any party that uses or relies on this drawing without AECOM's express written consent. Do not scale this document. All measurements must be obtained from the stated dimensions.



LEGEND

	Order limits
	Accommodation Work Area
	A548 through Flint to Chester Road Roundabout Accommodation Works

NOTES

© Crown Copyright 2025. All rights reserved.
 Ordnance Survey Licence AC0000808122.

ISSUE PURPOSE
 Environmental Statement

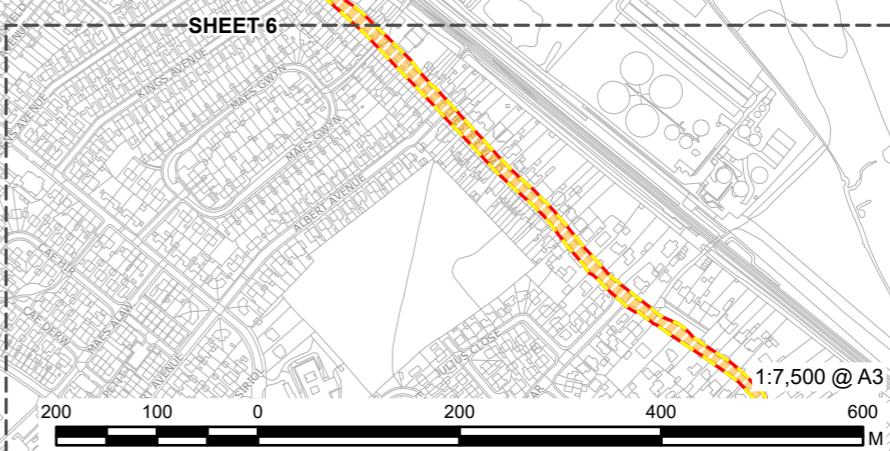
DATE
 March 2026

PROJECT NUMBER
 60768754

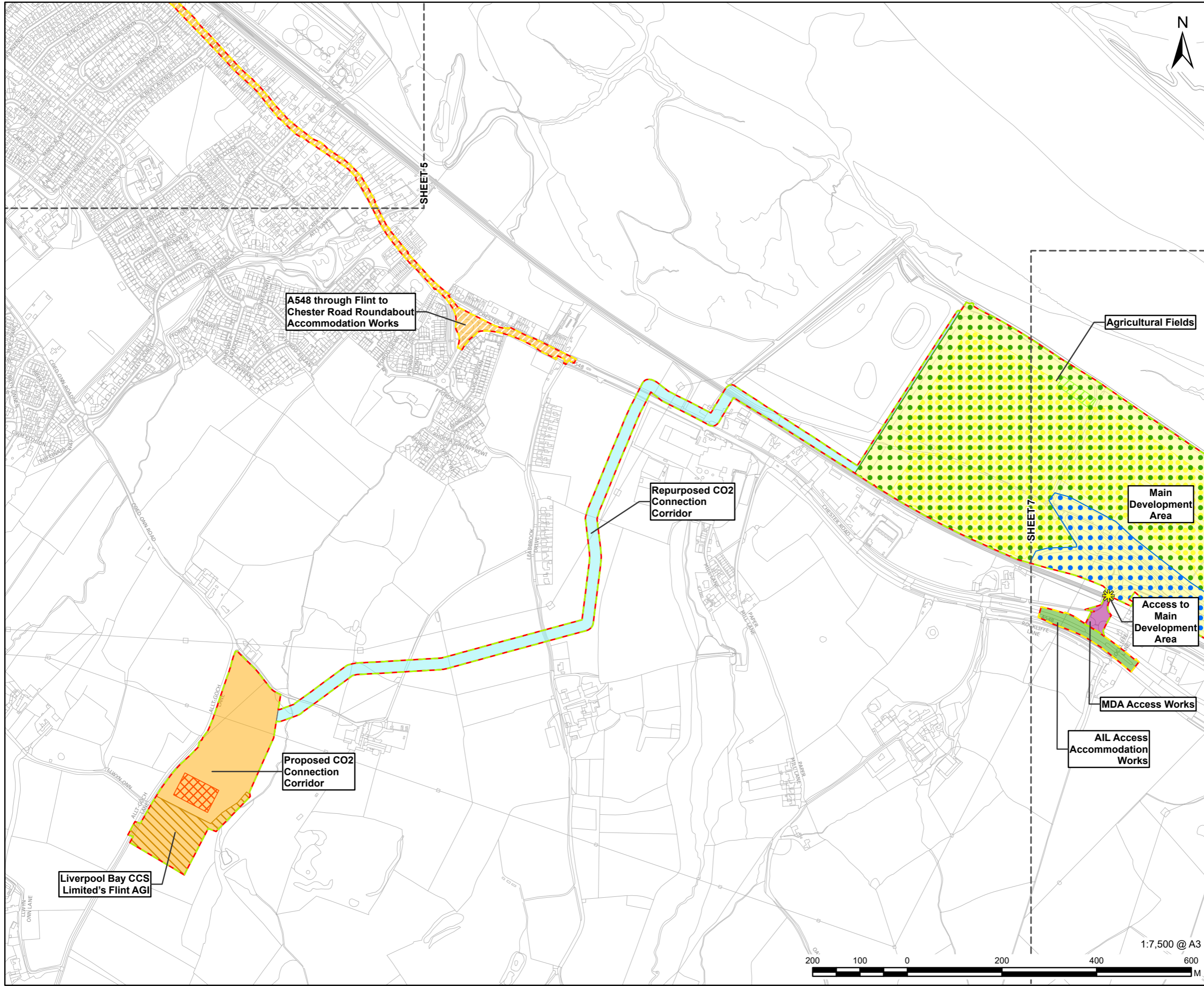
FIGURE TITLE
 Areas Described in the Environmental Statement
 Sheet 5 of 8

FIGURE NUMBER
 Figure 3-3

A548 through Flint to Chester Road Roundabout Accommodation Works



This drawing has been prepared for the use of AECOM's client. It may not be used, modified, reproduced or relied upon by third parties, except as agreed by AECOM or as required by law. AECOM accepts no responsibility, and denies any liability whatsoever, to any party that uses or relies on this drawing without AECOM's express written consent. Do not scale this document. All measurements must be obtained from the stated dimensions.



LEGEND

- Order limits
- Accommodation Work Area
- Construction & Operational Area
- Access to Main Development Area
- Agricultural Fields
- HV Overhead Line Corridor
- Main Development Area
- Repurposed CO₂ Connection Corridor
- Proposed CO₂ Connection Corridor
- MDA (Main Development Area) Access Works
- AIL (Abnormal and Indivisible Loads) Access Accommodation Works
- Liverpool Bay CCS Limited's Flint AGI
- CO₂ AGI (Proposed)
- Construction/Laydown Area
- Proposed CO₂ Connection Compound
- A548 through Flint to Chester Road Roundabout Accommodation Works

NOTES
© Crown Copyright 2025. All rights reserved.
Ordnance Survey Licence AC0000808122.

ISSUE PURPOSE
Environmental Statement

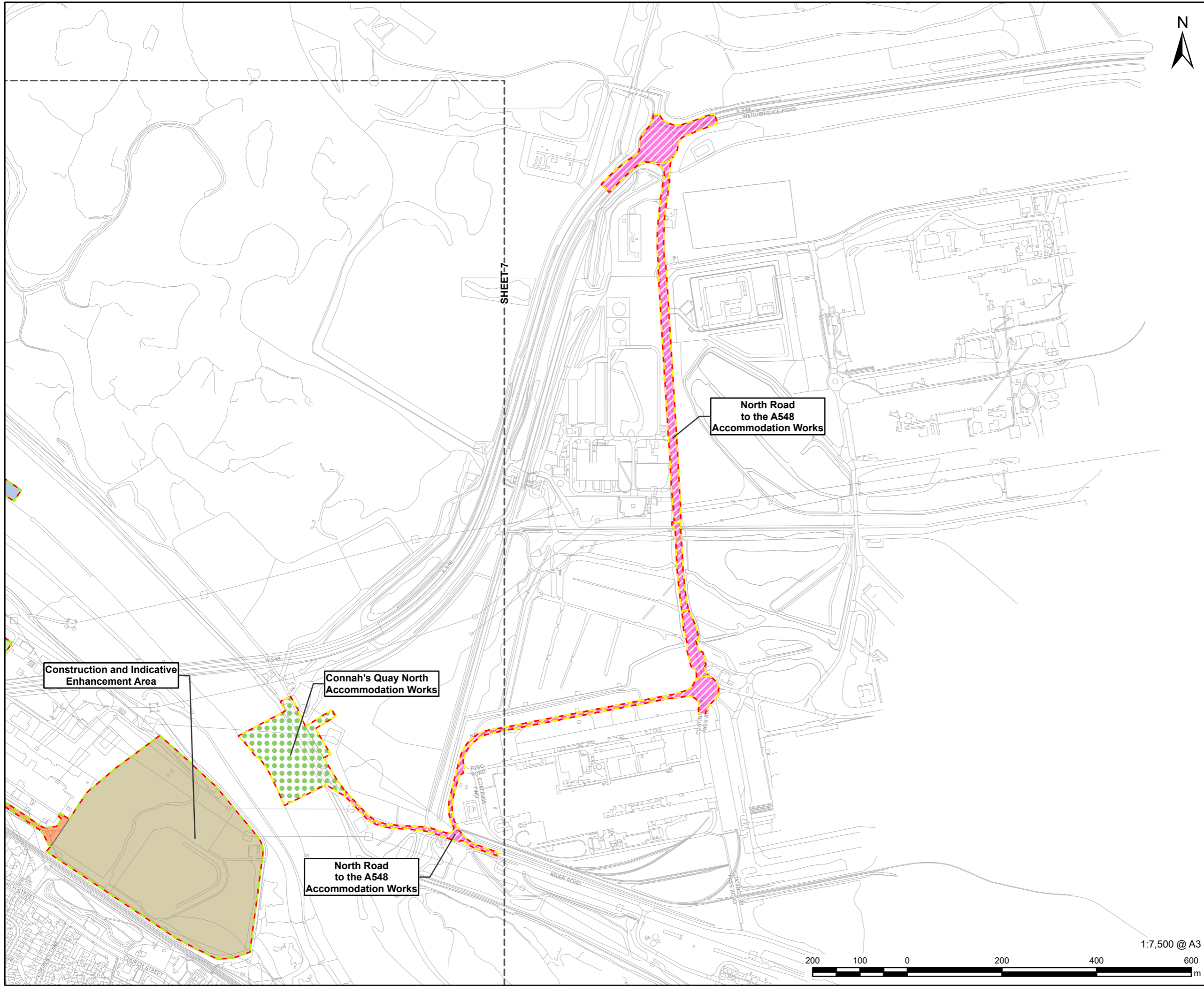
DATE
March 2026

PROJECT NUMBER
60768754

FIGURE TITLE
Areas Described in the Environmental Statement
Sheet 6 of 8

FIGURE NUMBER
Figure 3-3

This drawing has been prepared for the use of AECOM's client. It may not be used, modified, reproduced or relied upon by third parties, except as signed by AECOM or as required by law. AECOM accepts no responsibility, and denies any liability whatsoever, to any party that uses or relies on this drawing without AECOM's express written consent. Do not scale this document. All measurements must be obtained from the stated dimensions.



LEGEND

	Order limits
	Accommodation Work Area
	Construction & Operational Area
	Water Connection Corridor
	Electrical Connection Corridor
	Access to Construction & Indicative Enhancement Area
	Construction & Indicative Enhancement Area
	Connah's Quay North Accommodation Works
	North Road to the A548 Accommodation Works

NOTES
 © Crown Copyright 2025. All rights reserved.
 Ordnance Survey Licence AC0000808122.

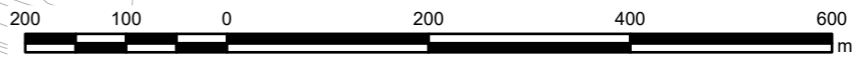
ISSUE PURPOSE
 Environmental Statement

DATE
 March 2026

PROJECT NUMBER
 60768754

FIGURE TITLE
 Areas Described in the Environmental Statement
 Sheet 8 of 8

FIGURE NUMBER
 Figure 3-3



This drawing has been prepared for the use of AECOM's client. It may not be used, modified, reproduced or relied upon by third parties, except as agreed by AECOM or as required by law. AECOM accepts no responsibility, and denies any liability whatsoever, to any party that uses or relies on this drawing without AECOM's express written consent. Do not scale this document. All measurements must be obtained from the stated dimensions.